

9.2km/5.5 miles

Great Gable

This is a fabulous walk to the summit of Great Gable, delivering a series of breathtaking views of Wasdale, Wast Water, Ennerdale and Great End. But don't be deceived by the relatively short distance and simple route – it's a very challenging climb, with a little clambering over rocks required near the summit.

The walk

1 From parking area 100m before Wasdale Head Inn, take track L of Lingmell House, passing a tiny chapel, L, in 100m. Keep on broad track, flanked by stone walls, until you reach Burnthwaite Farm.

2 At farm, follow waymark L in front of barn, and go through gate. Turn R on track, later passing through a kissing-gate, with wall R, until you reach a footbridge.

3 Cross footbridge then turn L on path uphill. The route rises steeply, and when grass meets scree, turn L on path that rises gently towards the col between Great Gable and Kirk Fell.

4 When you reach grassy col, with large cairn, look for path, R, rising through scree to summit of Great Gable. The path alternates between clear and vague, and as you clamber over rocks, you may need to use your hands occasionally. When you reach the summit, head for the cairn, with its small war memorial.

5 Leave the summit via the opposite side of the cairn

hard

3.5 hours

to the war memorial, and pick out the path, flanked by smaller cairns, as it heads downhill, with Great End towering over the far side of the valley. Look out for Sty Head Tarn down to the L – your descent brings you close to the R end of the tarn, by a Stretcher Box.

6 Turn R at Stretcher Box along path that leads downhill and back into Wasdale. The path eventually leads you back to the footbridge you crossed at Point 3. Cross footbridge and retrace your steps along the early section of the walk, passing Burnthwaite Farm, the tiny chapel and arriving back in Wasdale Head. If time allows, call into the wonderful Wasdale Head Inn to sample one of the cracking ales brewed on site.

DETAILS

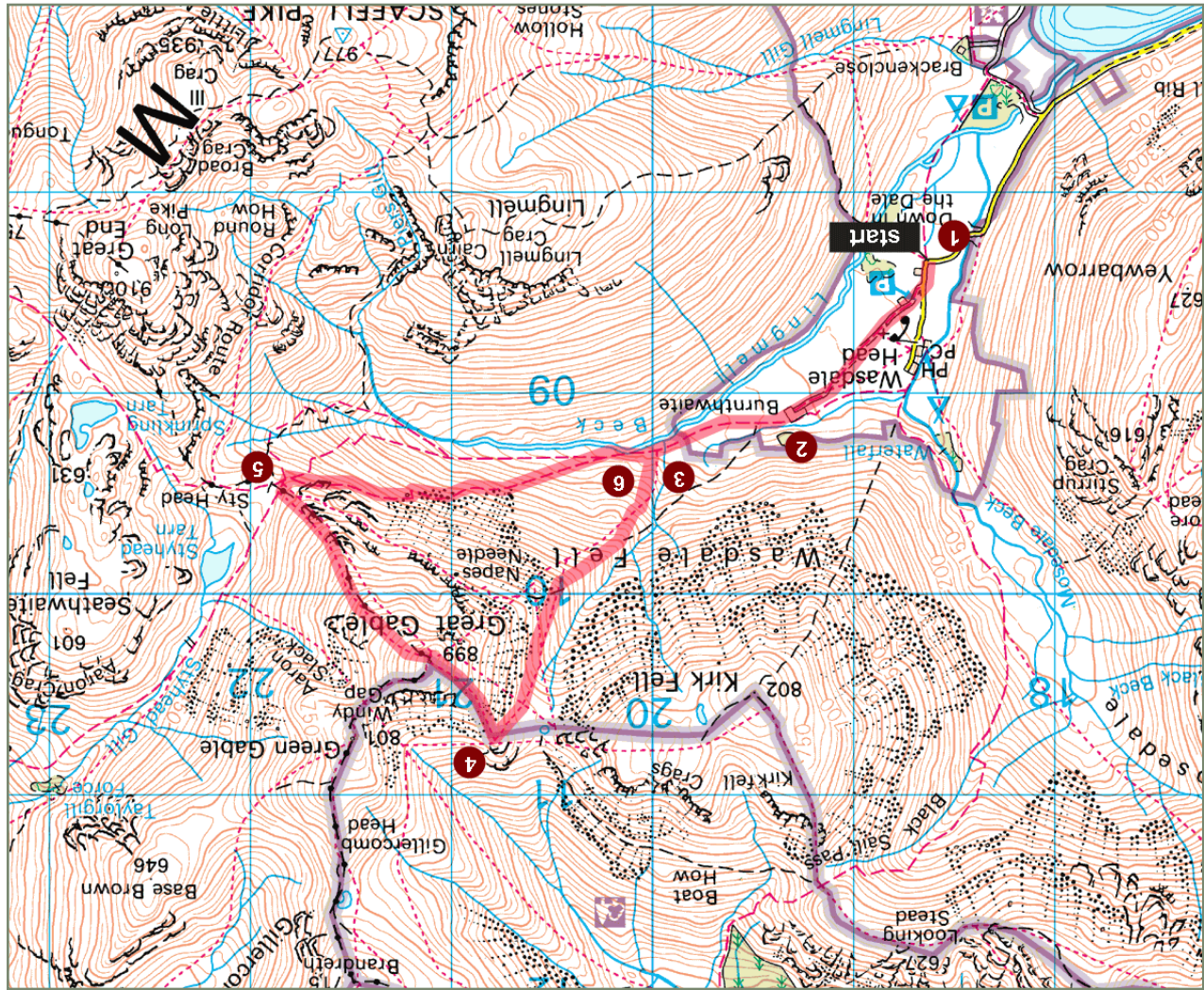
Country Walking ID 2989
Mag Route 20, December 2007
Region North
Area Cumbria
Length of walk 9.2km/5.5 miles
Time needed 3.5 hours
Difficulty Hard

IS THIS WALK FOR YOU?
Terrain Steep climbs on grassy and scree paths, some clambering over rocks
Stiles None

PLANNING
Parking Free car park on grass at Wasdale Head, grid ref NY186083
Start grid ref NY186084
Nearest town Ravenglass
Public toilets Behind Wasdale Head Inn

MAPS
 Ordnance Survey Explorer OLB, Landranger 89

JONATHAN MANNING



Mapping data licensed from Ordnance Survey with permission of HMSO. © Crown copyright 2008. All rights reserved. License number 100048462.